

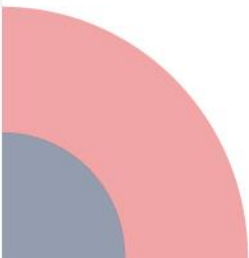


TALLER 2

Cómo asegurar la continuidad asistencial (factores clave)

Dr. Sergio Manzano

Dra. Nieves Domínguez

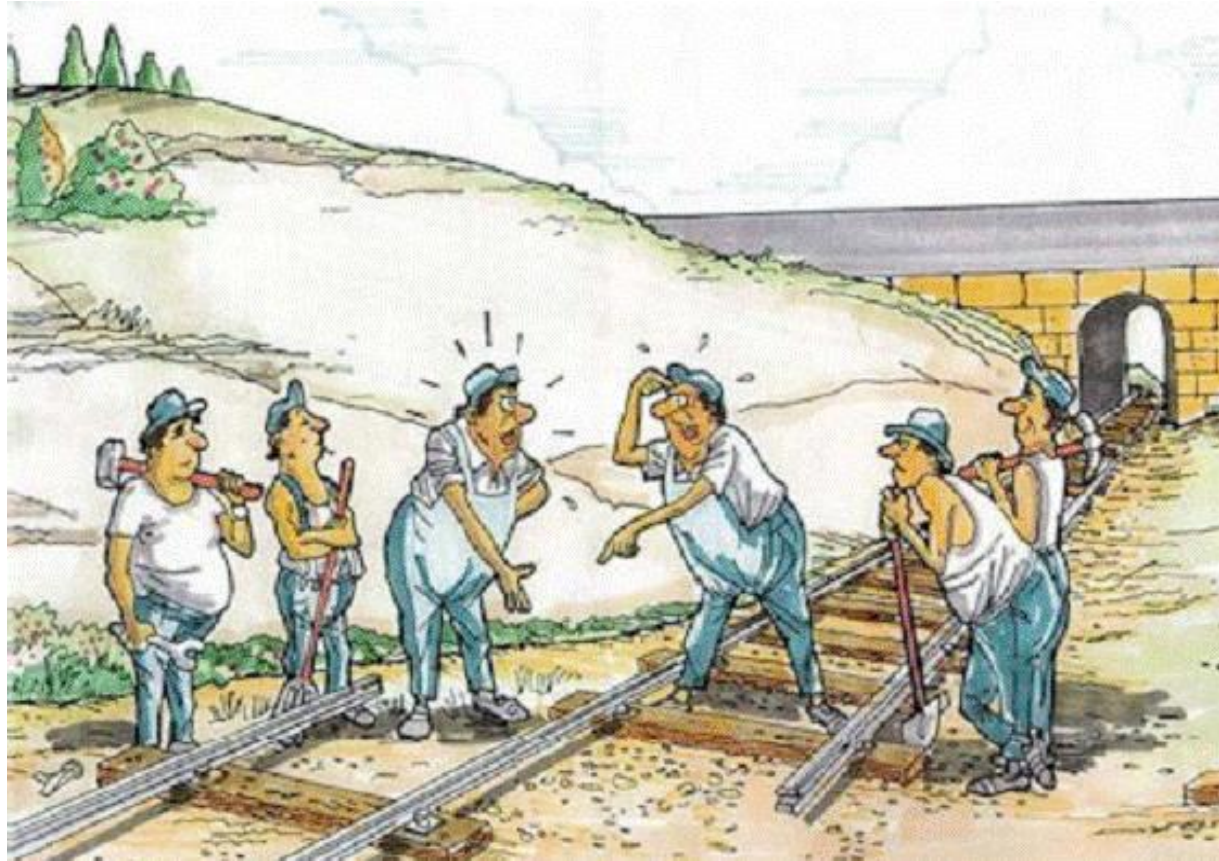
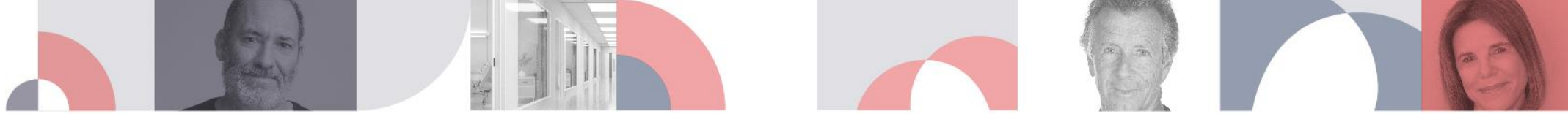


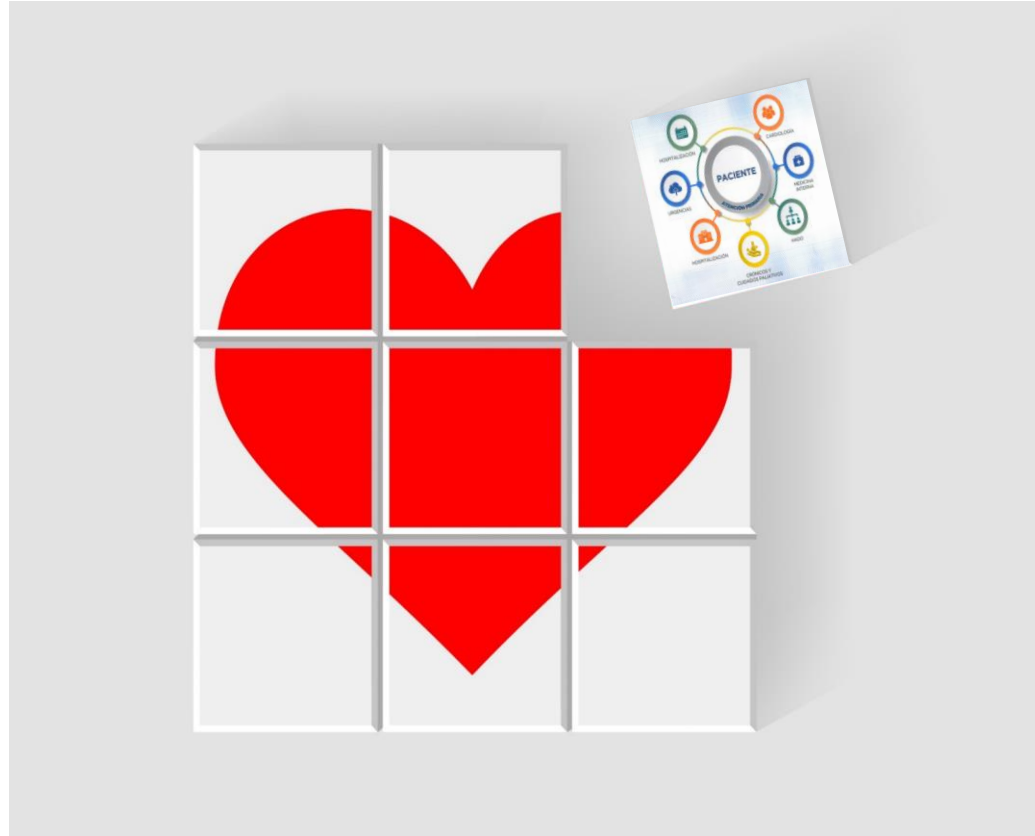
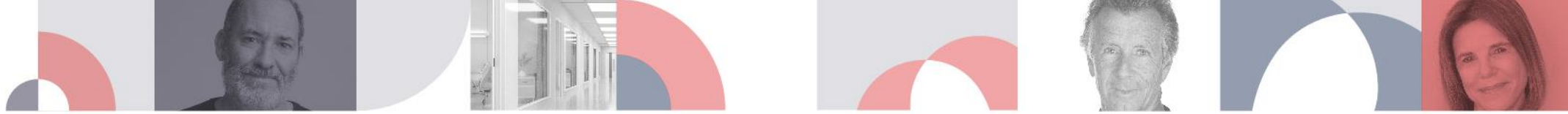


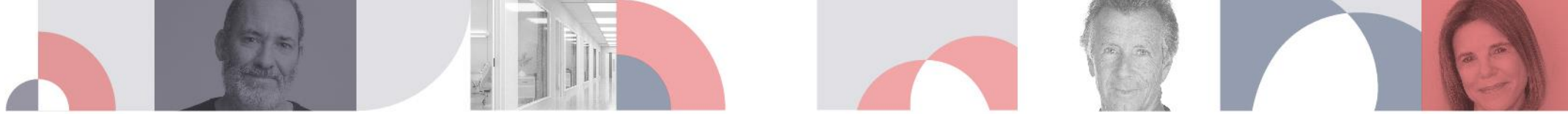
Continuidad asistencial

**¿De qué hablamos?
¿Es importante?**









 **SERVIZO GALEGO de SAÚDE** | **Xerencia de Xestión Integrada da Coruña A Coruña**

Proceso Asistencial Integrado Insuficiencia Cardíaca

María Nieves Domínguez González
Médico de Familia – Centro de Salud O Ventorrillo

2022 Jan 27;72(715):e84-e90.

doi: 10.3399/BJGP.2021.0340. Print 2022 Feb.

Continuity in general practice as predictor of mortality, acute hospitalisation, and use of out-of-hours care: a registry-based observational study in Norway

[Hogne Sandvik](#)¹, [Øystein Hetlevik](#)², [Jesper Blinkenberg](#)³, [Steinar Hunskaar](#)⁴

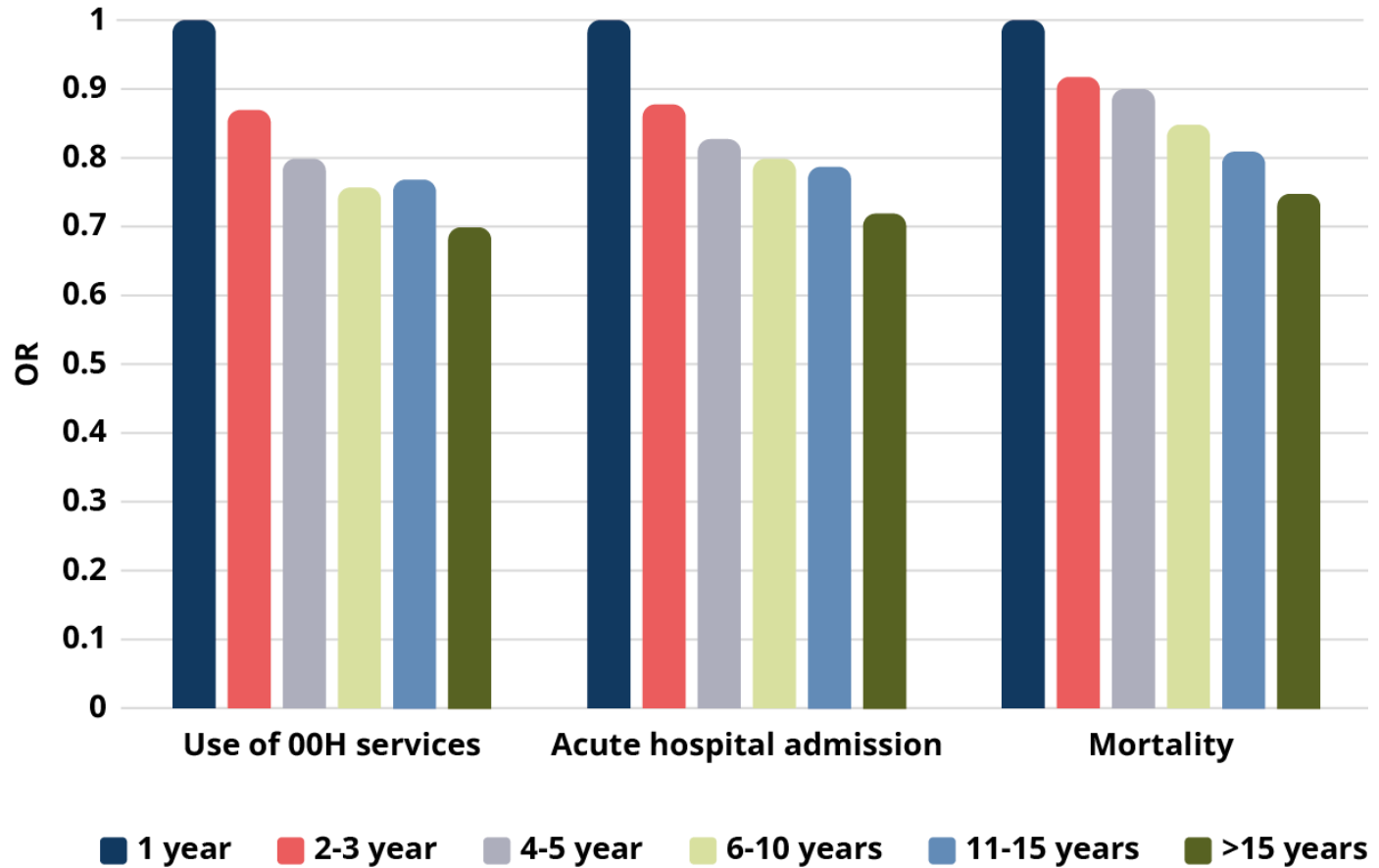
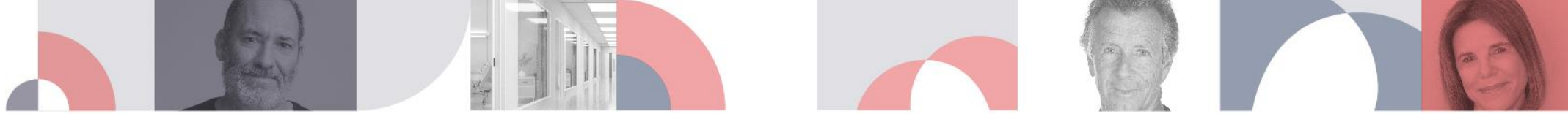
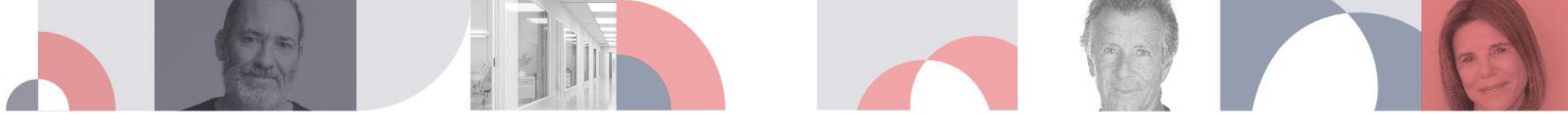


Figure 1. Associations between continuity measured as years with the same RGP and odds for use of OOH services, acute hospital admissions, and mortality during 2018. OOH = out-of-hours. OR = odds ratio.



Profesionales
Apoyar
Planificar
Colaborar
Evaluar
Compartir
Escuchar
Cuidar
Pacientes
Curar
Gestionar



A trabajar...



¡Gracias!

